

# The Maysville

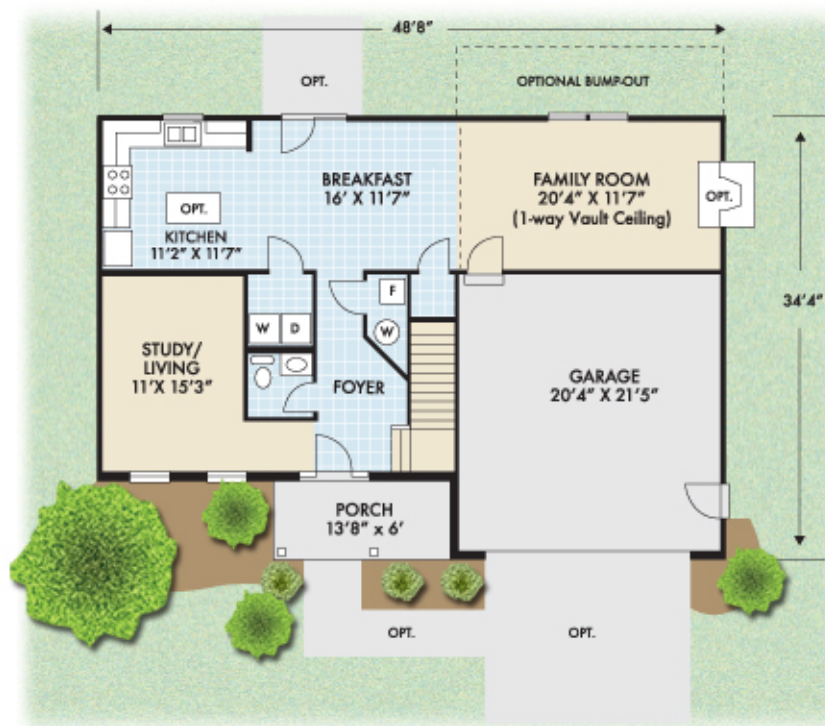


**Zeilman-James  
Homes, Inc.**

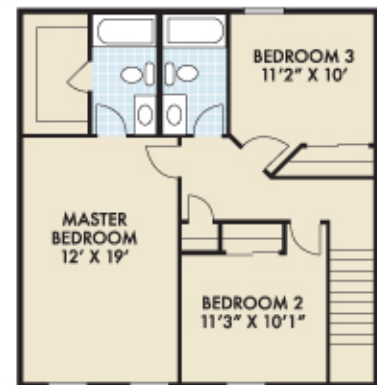
**513.947.3000**



*Optional items shown*



First Floor



Second Floor

Plan: Maysville	
First:	1050 sq.ft.
Second:	790 sq.ft.
Total sq.ft.:	1840 sq.ft.
Garage:	460 sq.ft.

This brochure is for illustrative purposes only. All floor plans, exterior renderings and dimensions are approximate, not drawn to scale, and are subject to change. Floor plans, exterior and standard features may vary per community and per elevation and options selected. Please see your sales professional for specific details. Zeilman-James Homes reserves the right to modify all plans and specifications without notice or obligation.