

The New Richmond

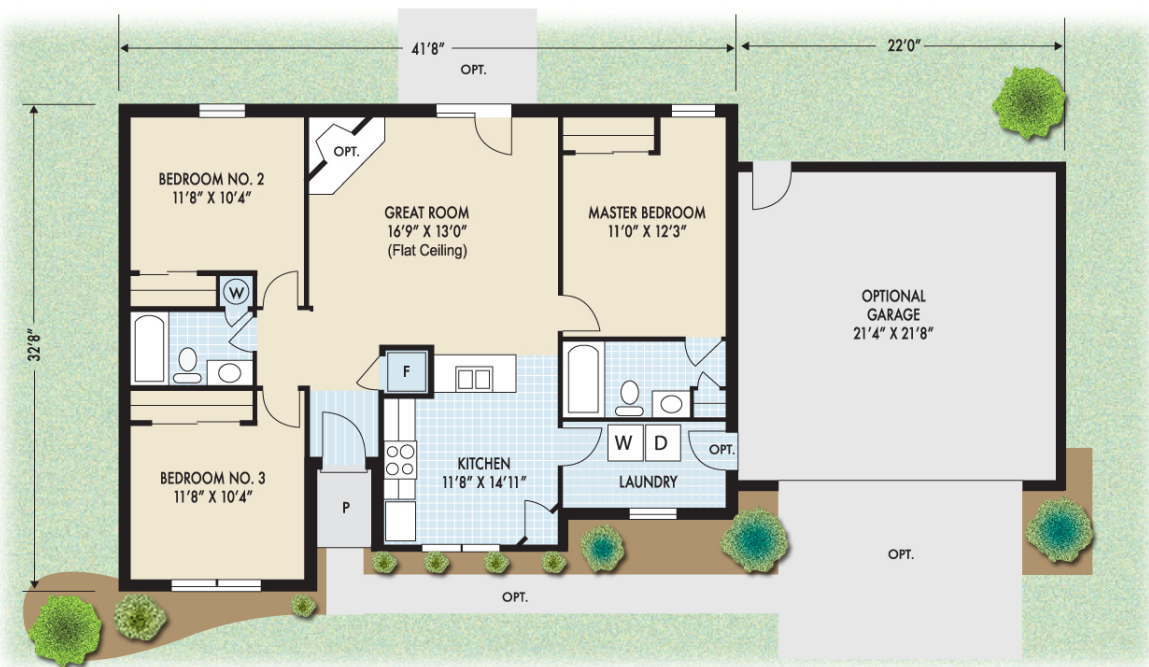


**Zeilman-James
Homes, Inc.**

513.947.3000



Optional items shown



Plan: New Richmond	
First:	1234 sq.ft.
Garage:	484 sq.ft.

This brochure is for illustrative purposes only. All floor plans, exterior renderings and dimensions are approximate, not drawn to scale, and are subject to change. Floor plans, exterior and standard features may vary per community and per elevation and options selected. Please see your sales professional for specific details. Zeilman-James Homes reserves the right to modify all plans and specifications without notice or obligation.