

The Copper Ridge

The Signature Collection

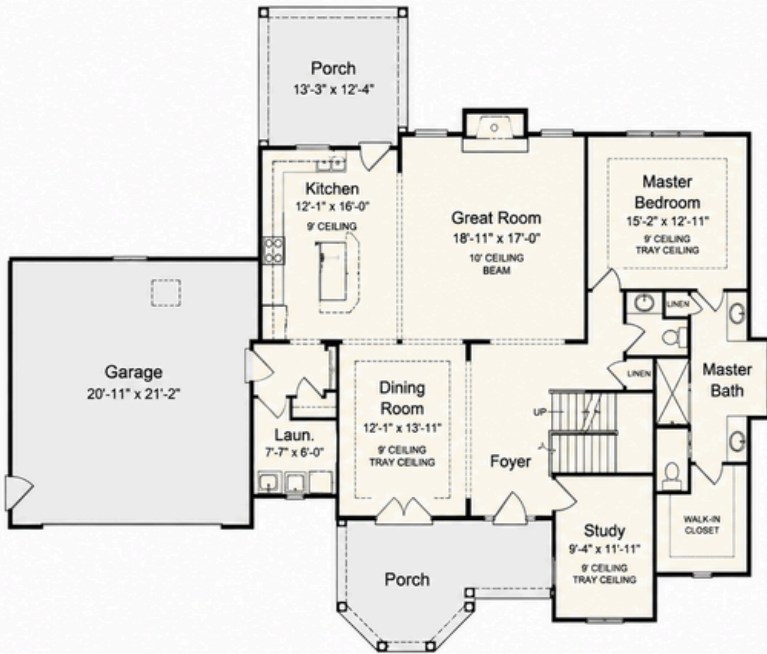


2390 Sq. Ft.

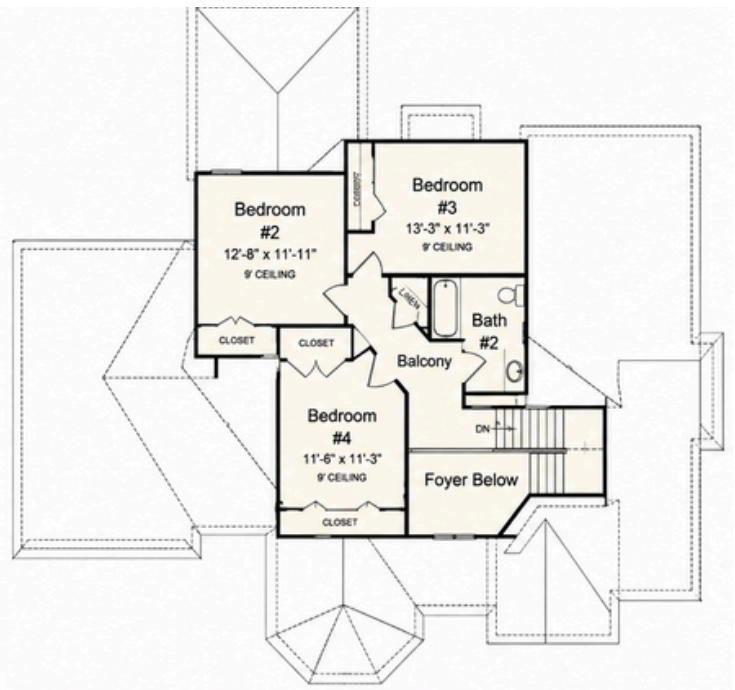
4
BEDROOMS

2.5
BATHROOMS

2-CAR
GARAGE



First Floor



Second Floor

This brochure is for illustrative purposes only. All floor plans, exterior renderings and dimensions are approximate, not drawn to scale and are subject to change. Floor plans, exteriors and standard features may vary per elevation and options selected. Optional items may be shown on exterior renderings. Zeilman-James reserves the right to modify all plans and specifications without notice or obligation. Please see your sales professional for specific details.



**ZEILMAN-JAMES
HOMES, INC.**

513-947-3000

www.zjhomes.com