

The Glenwood

The Signature Collection

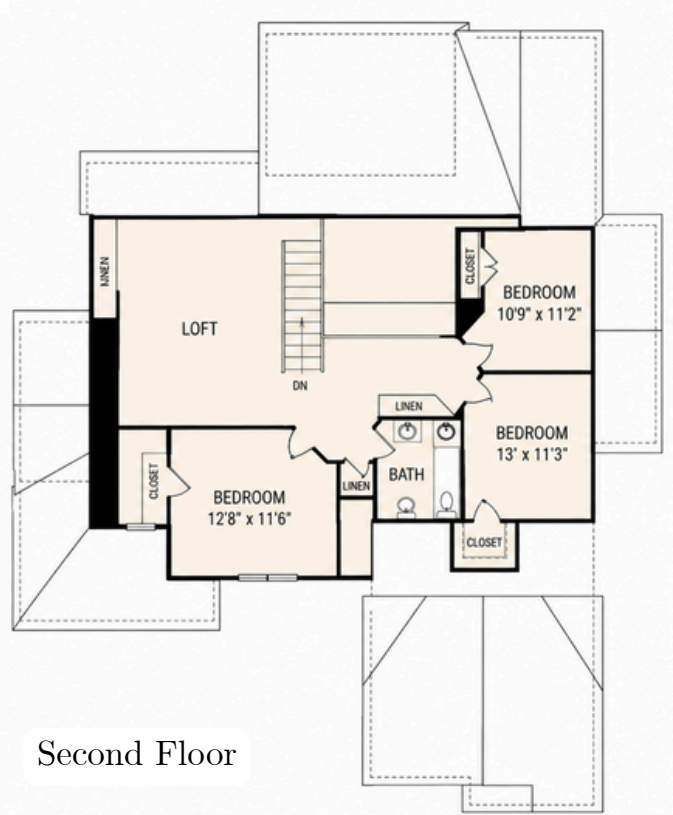
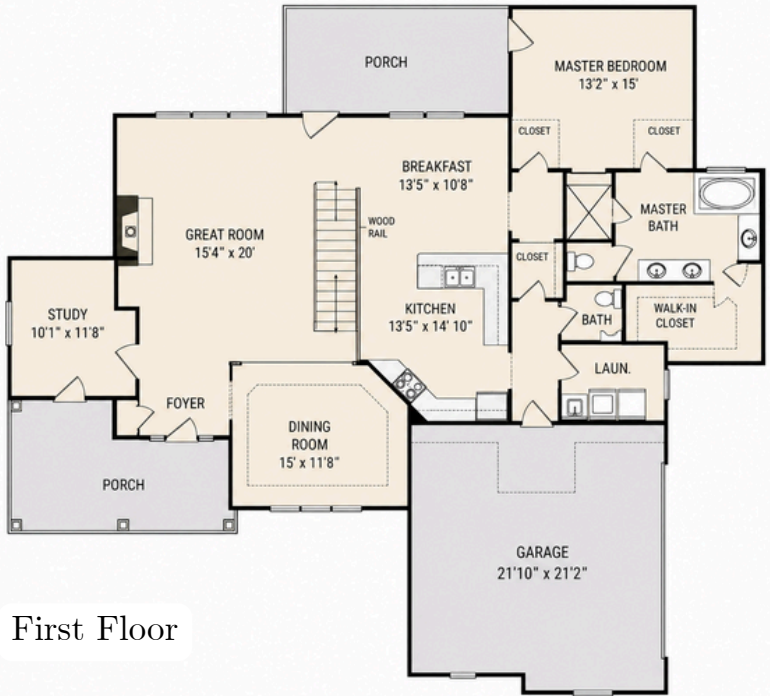


2547 Sq. Ft.

4
BEDROOMS

2.5
BATHROOMS

2-CAR
GARAGE



This brochure is for illustrative purposes only. All floor plans, exterior renderings and dimensions are approximate, not drawn to scale and are subject to change. Floor plans, exteriors and standard features may vary per elevation and options selected. Optional items may be shown on exterior renderings. Zeilman-James reserves the right to modify all plans and specifications without notice or obligation. Please see your sales professional for specific details.



**ZEILMAN-JAMES
HOMES, INC.**

513-947-3000

www.zjhomes.com