

# The Waverly

## The Signature Collection

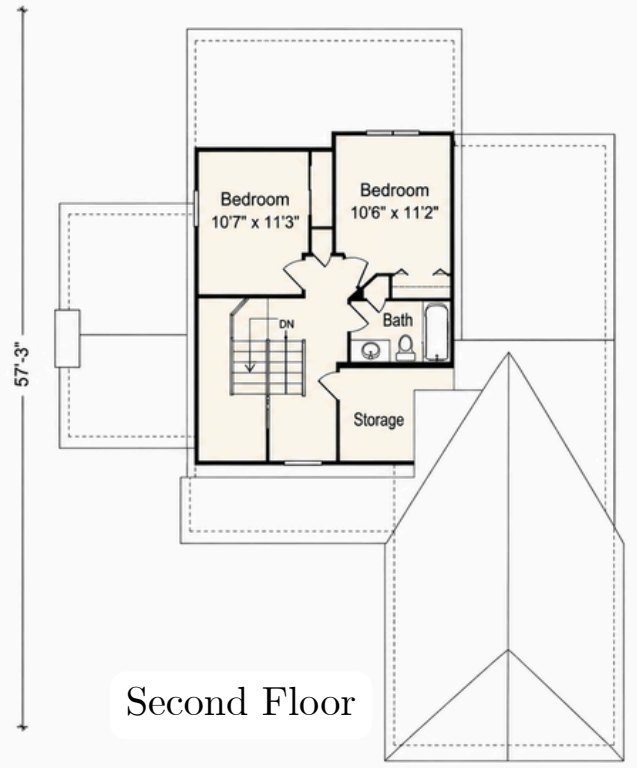
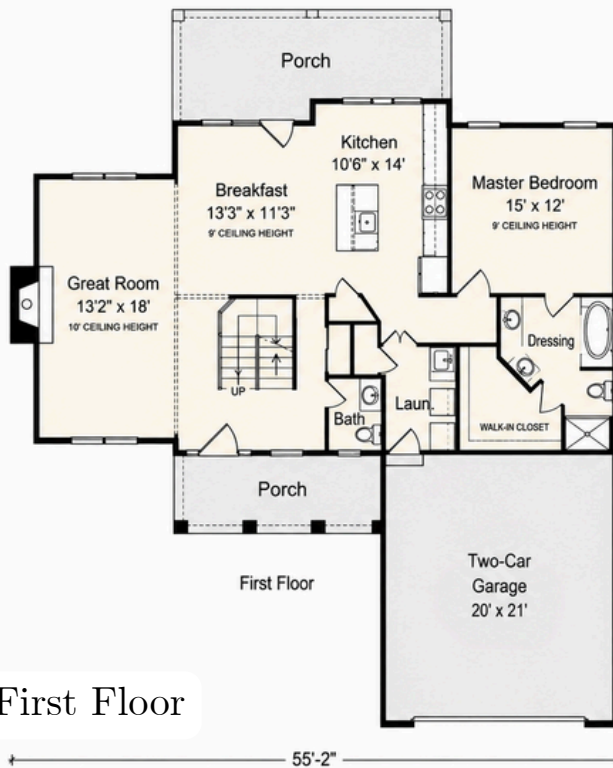


1826 Sq. Ft.

3  
BEDROOMS

2.5  
BATHROOMS

2-CAR  
GARAGE



This brochure is for illustrative purposes only. All floor plans, exterior renderings and dimensions are approximate, not drawn to scale and are subject to change. Floor plans, exteriors and standard features may vary per elevation and options selected. Optional items may be shown on exterior renderings. Zeilman-James reserves the right to modify all plans and specifications without notice or obligation. Please see your sales professional for specific details.



**ZEILMAN-JAMES  
HOMES, INC.**

513-947-3000

www.zjhomes.com